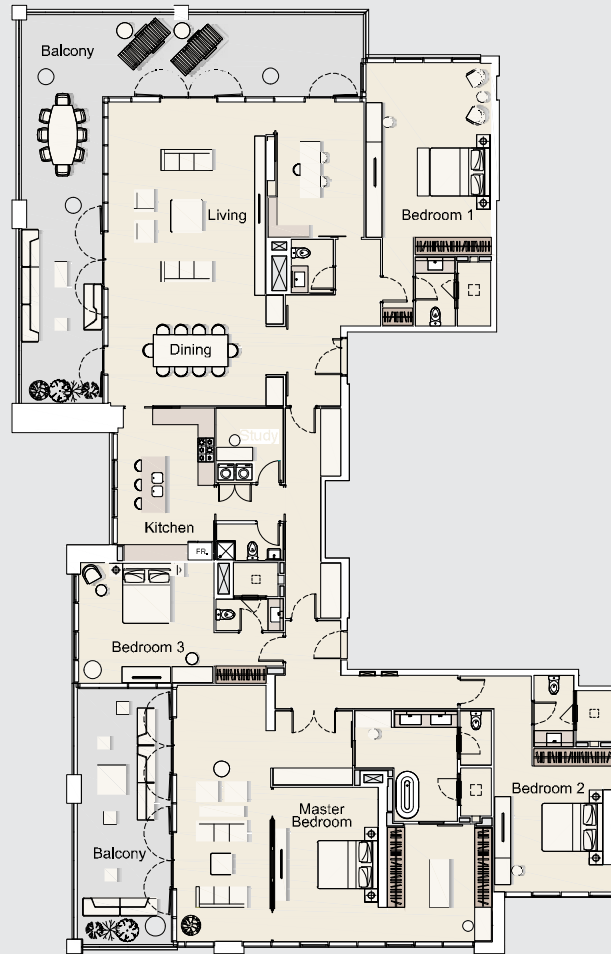
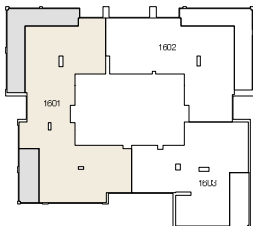


SCHEDULE 2

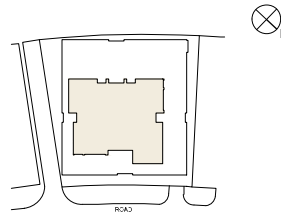
UNIT 1601



FLOOR PLAN



SITE PLAN



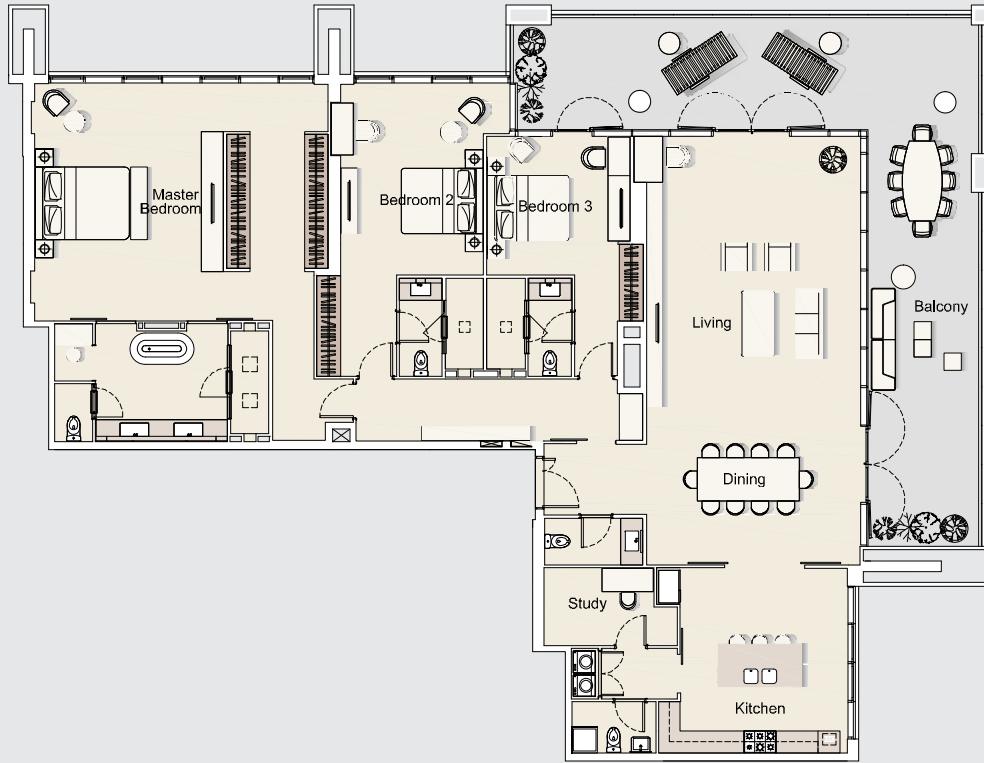
Purchaser's Initials: _____

Seller's Initials: _____

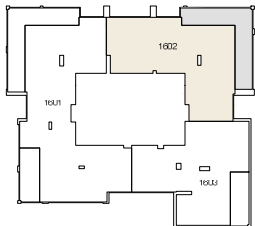
All drawings and dimensions are approximate. Drawings not to scale and are subject to change without notice. The developer reserves the right to make revisions. The units are measured at typical floor in the building and columns may vary in size depending on the floor level. The furnishings and accessories shown are for representation only. The length and width of the Unit and balcony varies depending on which floor and which orientation the unit is located within the building to comply with the building authority regulations.

SCHEDULE 2

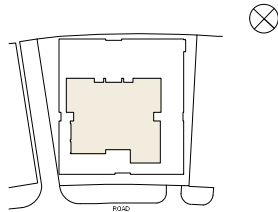
UNIT 1602



FLOOR PLAN



SITE PLAN



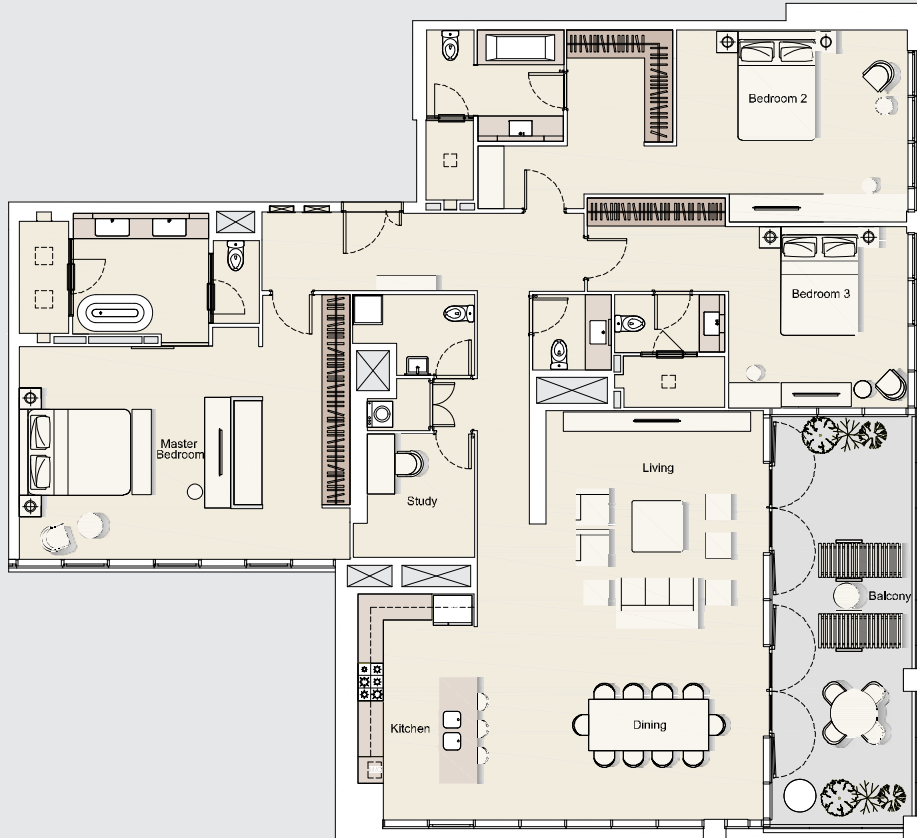
Purchaser's Initials: _____

Seller's Initials: _____

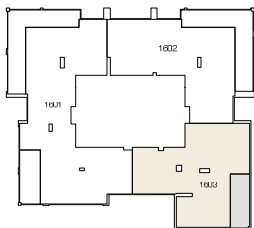
All drawings and dimensions are approximate. Drawings not to scale and are subject to change without notice. The developer reserves the right to make revisions. The units are measured at typical floor in the building and columns may vary in size depending on the floor level. The furnishings and accessories shown are for representation only. The length and width of the Unit and balcony varies depending on which floor and which orientation the unit is located within the building to comply with the building authority regulations.

SCHEDULE 2

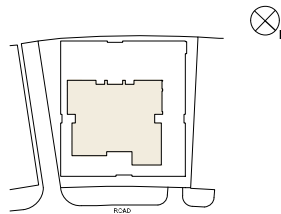
UNIT 1603



FLOOR PLAN



SITE PLAN



Purchaser's Initials: _____

Seller's Initials: _____

All drawings and dimensions are approximate. Drawings not to scale and are subject to change without notice. The developer reserves the right to make revisions. The units are measured at typical floor in the building and columns may vary in size depending on the floor level. The furnishings and accessories shown are for representation only. The length and width of the Unit and balcony varies depending on which floor and which orientation the unit is located within the building to comply with the building authority regulations.