



---

# RIVERSIDE

---

**DUBAI**  
PROPERTIES

---

R I V E R S I D E

---

  
DUBAI  
PROPERTIES

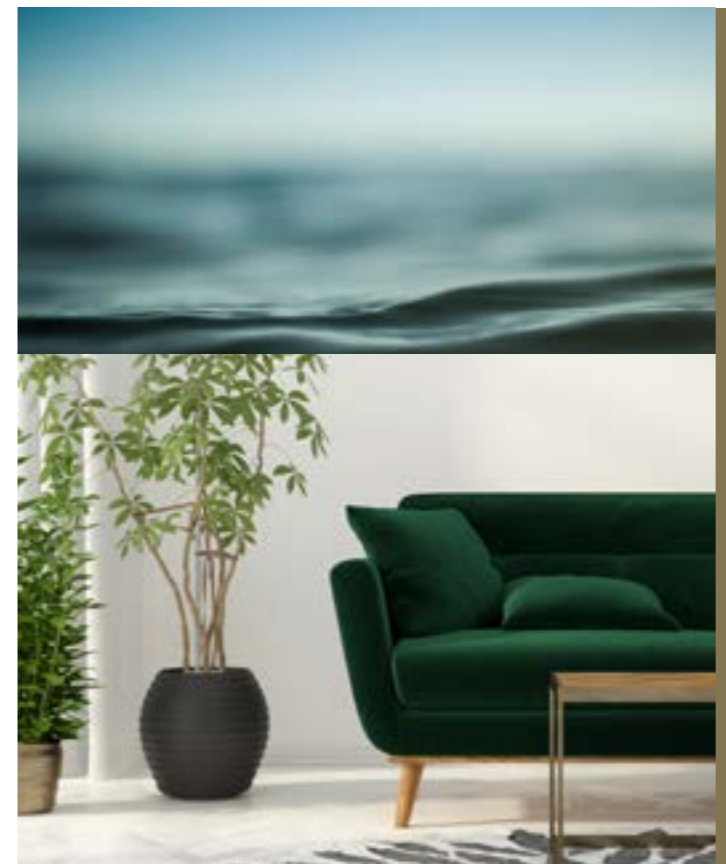


# MARASI BUSINESS BAY

## A FUTURE LANDMARK IN DUBAI

Riverside is part of Marasi Business Bay - an exciting new development by Dubai Properties, in the heart of Business Bay. With unrivalled views of the surrounding Dubai Canal, this 12km promenade has vast green outdoor spaces, onshore boutiques, leisure facilities as well as a choice of hotels and unique dining experiences in the form of floating restaurants.





# RIVERSIDE

## A PRESTIGIOUS ADDRESS IN DOWNTOWN

With spacious apartments in a bespoke design, high-class facilities, along with sweeping views of Dubai's most famous landmarks from your balcony, Riverside offers you everything you've been looking for in a downtown apartment.

# ROOMS WITH A VIEW

## STUNNING CITY VIEWS FROM YOUR HOME

The expansive glass façades at Riverside offer attractive vistas of the city. From your balcony, you can enjoy sweeping views of Dubai's most famous landmarks such as Dubai Canal, as well as the tallest towers in Dubai. Wake up to breathtaking sunrises every day.





# HIGH-CLASS FACILITIES

## THERE'S ALWAYS SOMETHING TO DO

With so many world-class facilities, you could start your day off with an energising workout in either the indoor or outdoor gym, followed by a morning splash in the swimming pool. And if your little ones want a share of the aquatic fun, there's also a dedicated children's swimming pool.





# LOCATION

## EASY ACCESS TO EVERYTHING YOU WANT

With retail spaces, cafes and restaurants, a neighbourhood park and 10km of Canal promenade, Riverside offers so much more to do and see.

### **Closest to Marasi Park**

The proposed Marasi Park is a waterfront restaurant and leisure destination that will comprise an Amphitheatre with a floating pavilion for views along the creek.

### **Close to Marasi Pier**

A marina with two extending piers, Marasi Pier will also have numerous food and beverage destinations with a mix of culinary experiences from Grab 'n' Go fresh items to fine dining.





# FLOOR PLANS

SPACIOUS UNITS WITH  
BESPOKE DESIGN

Gross Floor Area (GFA):  
51,832m<sup>2</sup> | 557,915 sq.ft

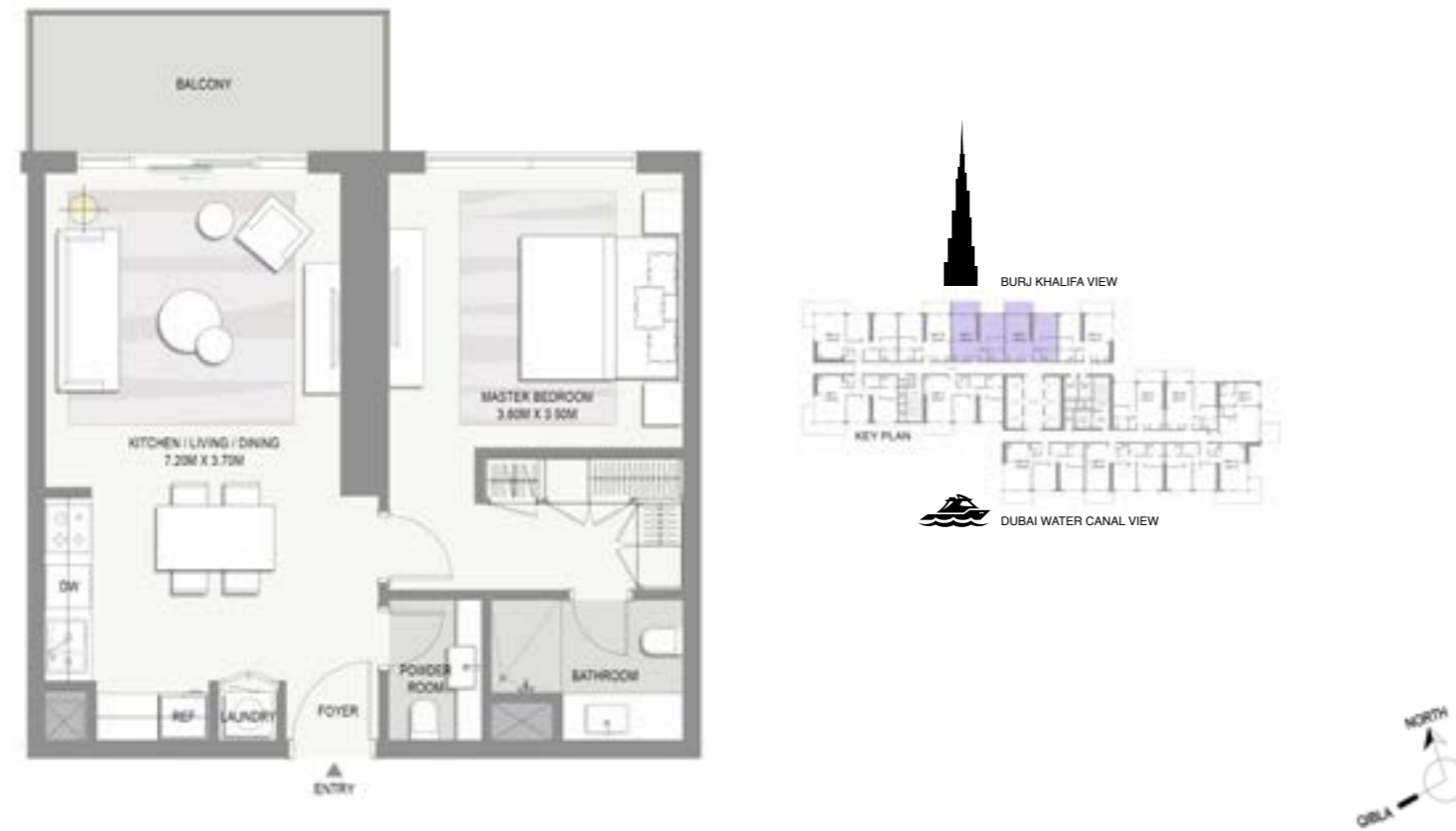


# 1 BEDROOM

## Riverside

Unit 2 & 3  
Podium Level 2  
1<sup>st</sup> to 17<sup>th</sup> Floor

Unit Area 652.83 Sq.Ft. / 60.65 Sq.M.  
Balcony Area 91.27 Sq.Ft. / 8.48 Sq.M.  
Total Area 744.10 Sq.Ft. / 69.13 Sq.M.



**Disclaimer :**

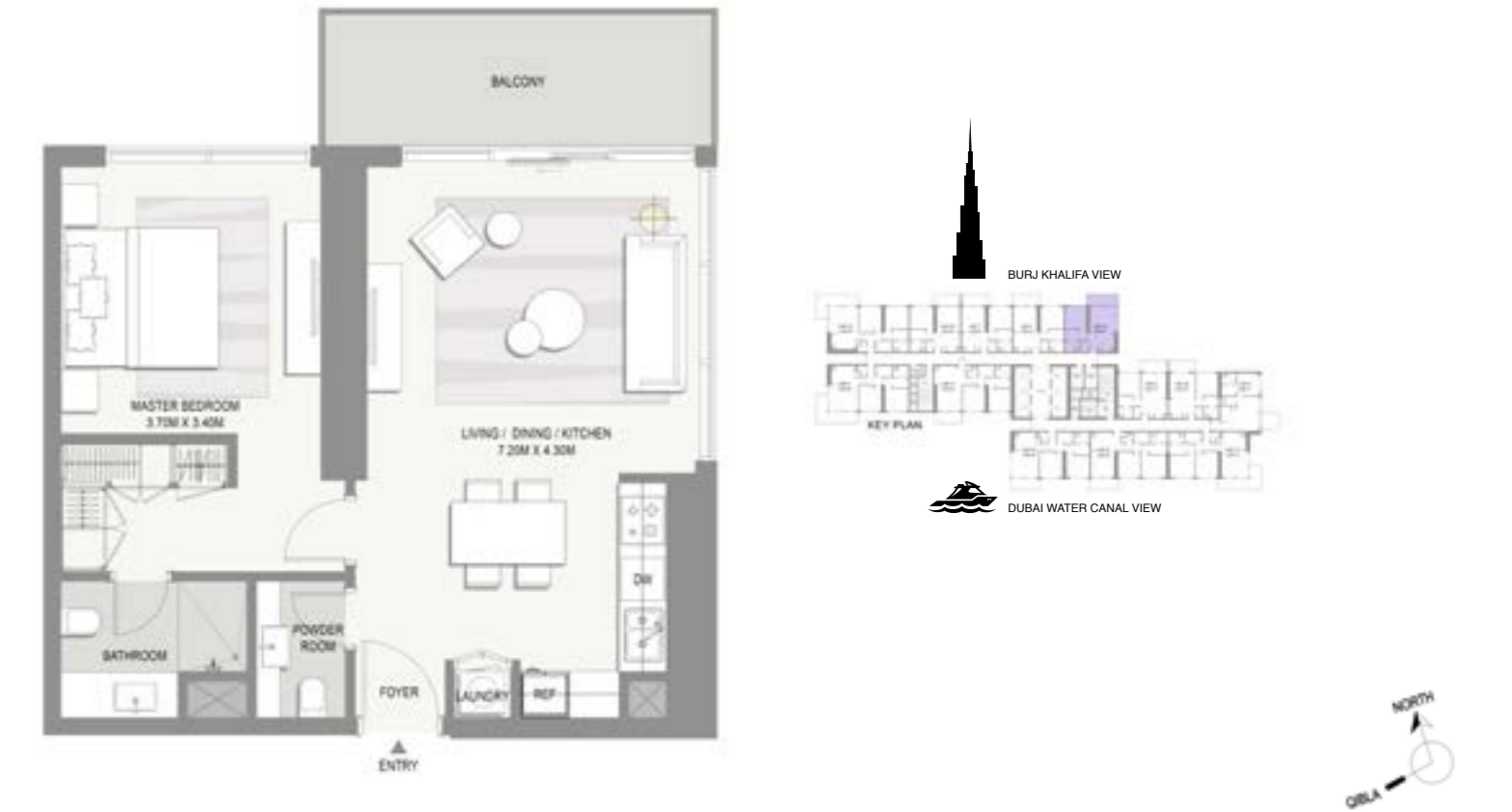
All materials, dimensions, and drawings are preliminary and indicative only and are subject to design changes. The actual as-built areas may vary from the stated areas. Furnishings, accessories, hard & soft landscaping, pavements, decorative features, swimming pool and other amenities displayed in this brochure are not part of a standard unit and are included for illustrative purposes only. Dubai Properties reserves the right to change any information within this brochure at its sole discretion and without providing any notice to the recipient. Dubai Properties reserves the right to make necessary revisions/alterations to any materials, plans, dimensions and drawings included in this brochure at its absolute discretion without incurring any liability from the recipient.

# 1 BEDROOM

## Riverside

Unit 1  
Podium Level 2  
1<sup>st</sup> to 17<sup>th</sup> Floor

Unit Area 666.28 Sq.Ft. / 61.90 Sq.M.  
Balcony Area 103.22 Sq.Ft. / 9.59 Sq.M.  
Total Area 769.51 Sq. Ft. / 71.49 Sq.M.



**Disclaimer :**

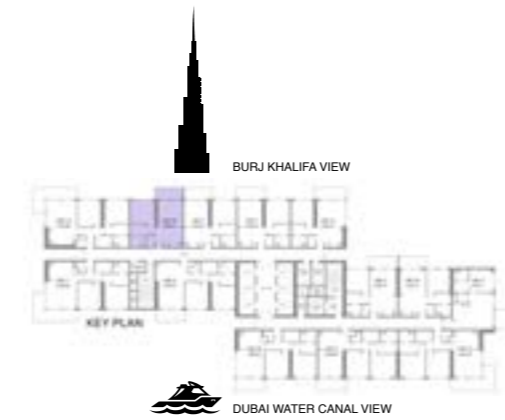
All materials, dimensions, and drawings are preliminary and indicative only and are subject to design changes. The actual as-built areas may vary from the stated areas. Furnishings, accessories, hard & soft landscaping, pavements, decorative features, swimming pool and other amenities displayed in this brochure are not part of a standard unit and are included for illustrative purposes only. Dubai Properties reserves the right to change any information within this brochure at its sole discretion and without providing any notice to the recipient. Dubai Properties reserves the right to make necessary revisions/alterations to any materials, plans, dimensions and drawings included in this brochure at its absolute discretion without incurring any liability from the recipient.

# 1 BEDROOM

## Riverside

Unit 4  
Podium Level 1 & 2  
1<sup>st</sup> to 17<sup>th</sup> Floor

Unit Area 652.83 Sq.Ft. / 60.65 Sq.M.  
Balcony Area 89.55 Sq.Ft. 8.32 Sq.M.  
Total Area 742.38 Sq.Ft. / 68.97 Sq.M.



**Disclaimer :**

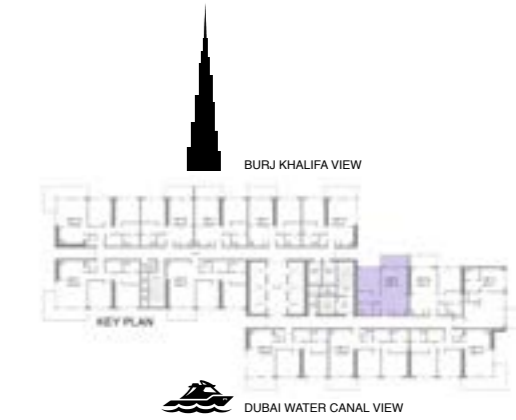
All materials, dimensions, and drawings are preliminary and indicative only and are subject to design changes. The actual as-built areas may vary from the stated areas. Furnishings, accessories, hard & soft landscaping, pavements, decorative features, swimming pool and other amenities displayed in this brochure are not part of a standard unit and are included for illustrative purposes only. Dubai Properties reserves the right to change any information within this brochure at its sole discretion and without providing any notice to the recipient. Dubai Properties reserves the right to make necessary revisions/alterations to any materials, plans, dimensions and drawings included in this brochure at its absolute discretion without incurring any liability from the recipient.

# 1 BEDROOM

## Riverside

Unit 13  
2<sup>nd</sup> to 15<sup>th</sup> Floor  
18<sup>th</sup> to 38<sup>th</sup> Floor

Unit Area 650 Sq.Ft. / 60.43 Sq.M.  
Balcony Area 90 Sq.Ft. / 8.34 Sq.M.  
Total Area 740 Sq.Ft. / 68.77 Sq.M.



**Disclaimer :**

All materials, dimensions, and drawings are preliminary and indicative only and are subject to design changes. The actual as-built areas may vary from the stated areas. Furnishings, accessories, hard & soft landscaping, pavements, decorative features, swimming pool and other amenities displayed in this brochure are not part of a standard unit and are included for illustrative purposes only. Dubai Properties reserves the right to change any information within this brochure at its sole discretion and without providing any notice to the recipient. Dubai Properties reserves the right to make necessary revisions/alterations to any materials, plans, dimensions and drawings included in this brochure at its absolute discretion without incurring any liability from the recipient.

# 1 BEDROOM

**Riverside**  
Unit 13 | Level 1

Unit Area 651.10 Sq.Ft. / 60.49 Sq.M.  
Balcony Area 278.57 Sq.Ft. / 25.88 Sq.M.  
Total Area 929.67 Sq.Ft. / 86.37 Sq.M.



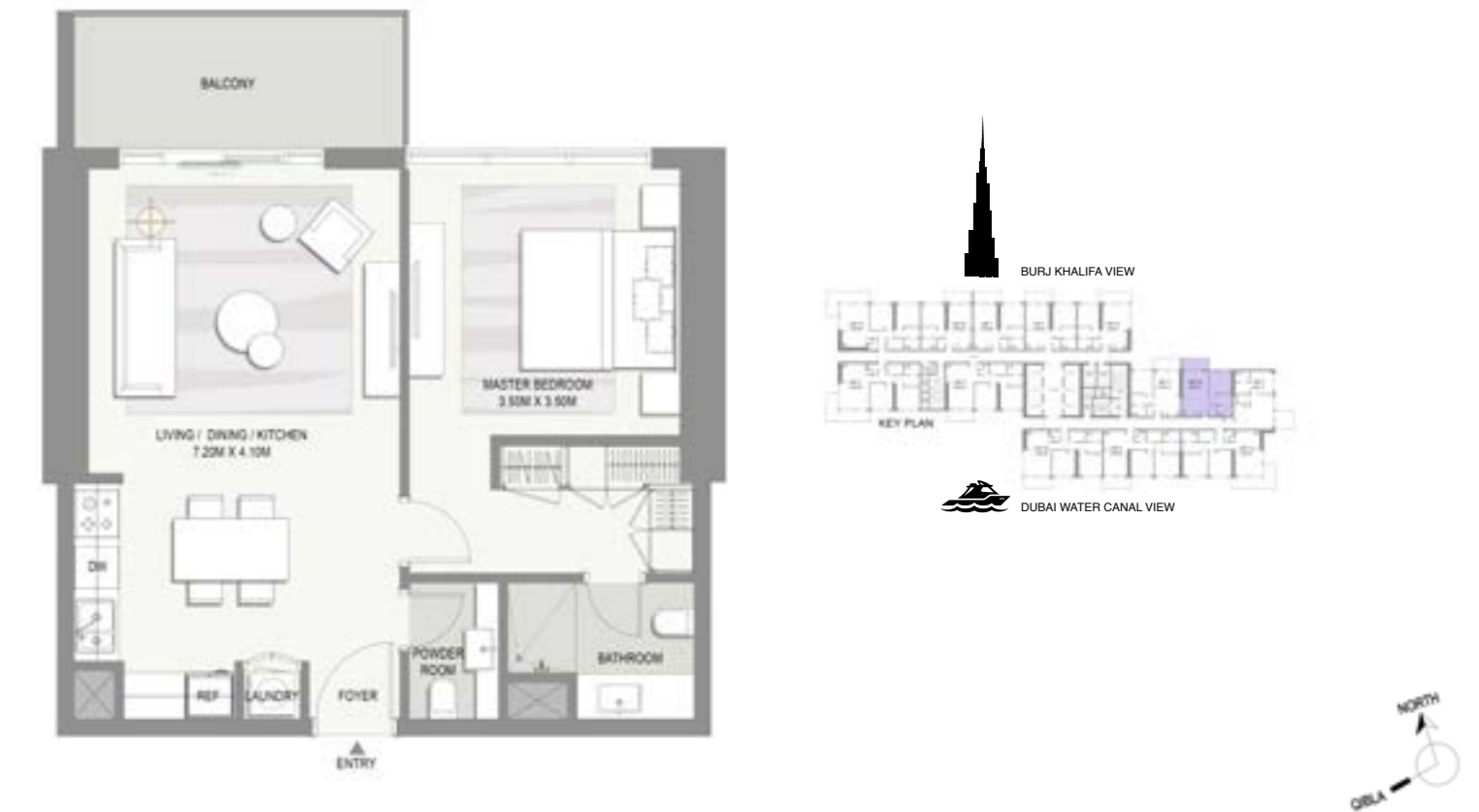
**Disclaimer :**

All materials, dimensions, and drawings are preliminary and indicative only and are subject to design changes. The actual as-built areas may vary from the stated areas. Furnishings, accessories, hard & soft landscaping, pavements, decorative features, swimming pool and other amenities displayed in this brochure are not part of a standard unit and are included for illustrative purposes only. Dubai Properties reserves the right to change any information within this brochure at its sole discretion and without providing any notice to the recipient. Dubai Properties reserves the right to make necessary revisions/alterations to any materials, plans, dimensions and drawings included in this brochure at its absolute discretion without incurring any liability from the recipient.

# 1 BEDROOM

**Riverside**  
Unit 12  
2<sup>nd</sup> to 15<sup>th</sup> Floor  
18<sup>th</sup> to 38<sup>th</sup> Floor

Unit Area 652 Sq.Ft. / 60.59 Sq.M.  
Balcony 90 Sq.Ft. / 8.34 Sq.M.  
Total Area 742 Sq.Ft. / 68.93 Sq.M.



**Disclaimer :**

All materials, dimensions, and drawings are preliminary and indicative only and are subject to design changes. The actual as-built areas may vary from the stated areas. Furnishings, accessories, hard & soft landscaping, pavements, decorative features, swimming pool and other amenities displayed in this brochure are not part of a standard unit and are included for illustrative purposes only. Dubai Properties reserves the right to change any information within this brochure at its sole discretion and without providing any notice to the recipient. Dubai Properties reserves the right to make necessary revisions/alterations to any materials, plans, dimensions and drawings included in this brochure at its absolute discretion without incurring any liability from the recipient.

# 1 BEDROOM

**Riverside**  
Unit 12 | Level 1

Unit Area 653 Sq.Ft. / 60.65 Sq.M.  
Balcony Area 277 Sq.Ft. / 25.72 Sq.M.  
Total Area 930 Sq.Ft. / 86.37 Sq.M.



**Disclaimer :**

All materials, dimensions, and drawings are preliminary and indicative only and are subject to design changes. The actual as-built areas may vary from the stated areas. Furnishings, accessories, hard & soft landscaping, pavements, decorative features, swimming pool and other amenities displayed in this brochure are not part of a standard unit and are included for illustrative purposes only. Dubai Properties reserves the right to change any information within this brochure at its sole discretion and without providing any notice to the recipient. Dubai Properties reserves the right to make necessary revisions/alterations to any materials, plans, dimensions and drawings included in this brochure at its absolute discretion without incurring any liability from the recipient.

# 1 BEDROOM

**Riverside**  
Unit 11  
2<sup>nd</sup> to 15<sup>th</sup> Floor  
18<sup>th</sup> to 38<sup>th</sup> Floor

Unit Area 678 Sq.Ft. / 63.01 Sq.M.  
Balcony Area 99 Sq.Ft. / 9.22 Sq.M.  
Total Area 777 Sq.Ft. / 72.23 Sq.M.



**Disclaimer :**

All materials, dimensions, and drawings are preliminary and indicative only and are subject to design changes. The actual as-built areas may vary from the stated areas. Furnishings, accessories, hard & soft landscaping, pavements, decorative features, swimming pool and other amenities displayed in this brochure are not part of a standard unit and are included for illustrative purposes only. Dubai Properties reserves the right to change any information within this brochure at its sole discretion and without providing any notice to the recipient. Dubai Properties reserves the right to make necessary revisions/alterations to any materials, plans, dimensions and drawings included in this brochure at its absolute discretion without incurring any liability from the recipient.

# 1 BEDROOM

## Riverside

Unit 11 | Level 1

Unit Area 678 Sq.Ft. / 63.02 Sq.M.  
 Balcony Area 145 Sq.Ft. / 13.47 Sq.M.  
 Total Area 823 Sq.Ft. / 76.49 Sq.M.



**Disclaimer :**

All materials, dimensions, and drawings are preliminary and indicative only and are subject to design changes. The actual as-built areas may vary from the stated areas. Furnishings, accessories, hard & soft landscaping, pavements, decorative features, swimming pool and other amenities displayed in this brochure are not part of a standard unit and are included for illustrative purposes only. Dubai Properties reserves the right to change any information within this brochure at its sole discretion and without providing any notice to the recipient. Dubai Properties reserves the right to make necessary revisions/alterations to any materials, plans, dimensions and drawings included in this brochure at its absolute discretion without incurring any liability from the recipient.

# 2 BEDROOM

## Riverside

Unit 6  
 Podium Level 1 & 2  
 1<sup>st</sup> to 40<sup>th</sup> Floor

Unit Area 1024.93 Sq.Ft. / 95.22 Sq.M.  
 Balcony Area 191.92 Sq.Ft. / 17.83 Sq.M.  
 Total Area 1216.86 Sq.Ft. / 113.05 Sq.M.



**Disclaimer :**

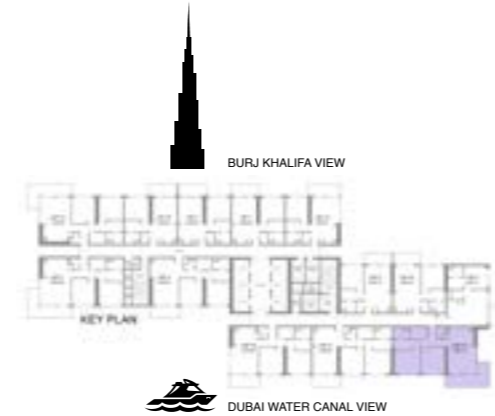
All materials, dimensions, and drawings are preliminary and indicative only and are subject to design changes. The actual as-built areas may vary from the stated areas. Furnishings, accessories, hard & soft landscaping, pavements, decorative features, swimming pool and other amenities displayed in this brochure are not part of a standard unit and are included for illustrative purposes only. Dubai Properties reserves the right to change any information within this brochure at its sole discretion and without providing any notice to the recipient. Dubai Properties reserves the right to make necessary revisions/alterations to any materials, plans, dimensions and drawings included in this brochure at its absolute discretion without incurring any liability from the recipient.

## 2 BEDROOM

### Riverside

Unit 10  
2<sup>nd</sup> to 38<sup>th</sup> Floor

Unit Area 1013 Sq.Ft. / 94.15 Sq.M.  
Balcony Area 191 Sq.Ft. / 17.66 Sq.M.  
Total Area 1204 Sq.Ft. / 111.81 Sq.M.



**Disclaimer :**

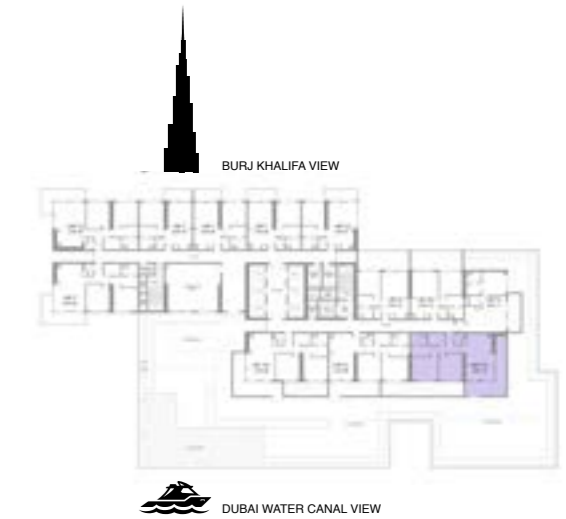
All materials, dimensions, and drawings are preliminary and indicative only and are subject to design changes. The actual as-built areas may vary from the stated areas. Furnishings, accessories, hard & soft landscaping, pavements, decorative features, swimming pool and other amenities displayed in this brochure are not part of a standard unit and are included for illustrative purposes only. Dubai Properties reserves the right to change any information within this brochure at its sole discretion and without providing any notice to the recipient. Dubai Properties reserves the right to make necessary revisions/alterations to any materials, plans, dimensions and drawings included in this brochure at its absolute discretion without incurring any liability from the recipient.

## 2 BEDROOM

### Riverside

Unit 10 | Level 1

Unit Area 1022.14 Sq.Ft. / 94.96 Sq.M.  
Balcony Area 311.18 Sq.Ft. / 28.91 Sq.M.  
Total Area 1333.32 Sq.Ft. / 123.87 Sq.M.



**Disclaimer :**

All materials, dimensions, and drawings are preliminary and indicative only and are subject to design changes. The actual as-built areas may vary from the stated areas. Furnishings, accessories, hard & soft landscaping, pavements, decorative features, swimming pool and other amenities displayed in this brochure are not part of a standard unit and are included for illustrative purposes only. Dubai Properties reserves the right to change any information within this brochure at its sole discretion and without providing any notice to the recipient. Dubai Properties reserves the right to make necessary revisions/alterations to any materials, plans, dimensions and drawings included in this brochure at its absolute discretion without incurring any liability from the recipient.

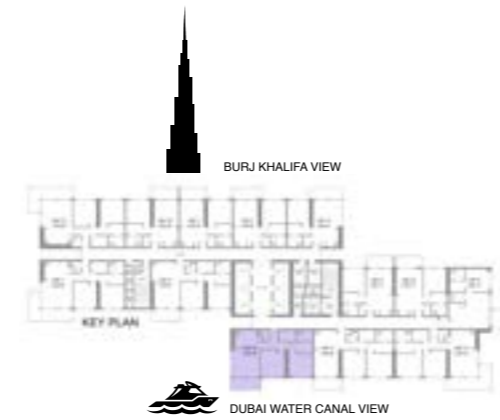


## 2 BEDROOM

### Riverside

Unit 8  
2<sup>nd</sup> to 38<sup>th</sup> Floor

Unit Area 986 Sq.Ft. / 91.60 Sq.M.  
Balcony Area 100 Sq.Ft. / 9.29 Sq.M.  
Total Area 1086 Sq.Ft. / 100.89 Sq.M.



**Disclaimer :**

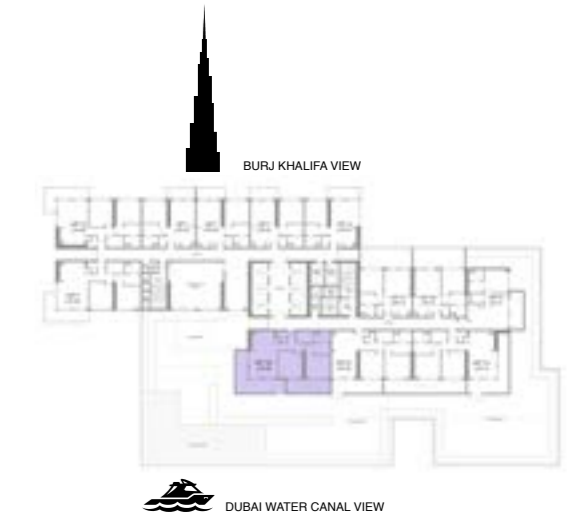
All materials, dimensions, and drawings are preliminary and indicative only and are subject to design changes. The actual as-built areas may vary from the stated areas. Furnishings, accessories, hard & soft landscaping, pavements, decorative features, swimming pool and other amenities displayed in this brochure are not part of a standard unit and are included for illustrative purposes only. Dubai Properties reserves the right to change any information within this brochure at its sole discretion and without providing any notice to the recipient. Dubai Properties reserves the right to make necessary revisions/alterations to any materials, plans, dimensions and drawings included in this brochure at its absolute discretion without incurring any liability from the recipient.

## 2 BEDROOM

### Riverside

Unit 8 | Level 1

Unit Area 994.58 Sq.Ft. / 92.40 Sq.M.  
Balcony Area 292.34 Sq.Ft. / 27.16 Sq.M.  
Total Area 1286.93 Sq.Ft. / 119.56 Sq.M.



**Disclaimer :**

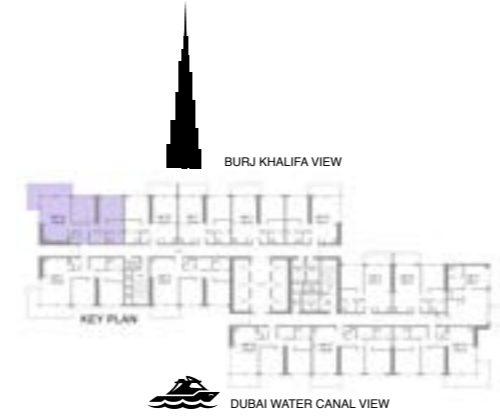
All materials, dimensions, and drawings are preliminary and indicative only and are subject to design changes. The actual as-built areas may vary from the stated areas. Furnishings, accessories, hard & soft landscaping, pavements, decorative features, swimming pool and other amenities displayed in this brochure are not part of a standard unit and are included for illustrative purposes only. Dubai Properties reserves the right to change any information within this brochure at its sole discretion and without providing any notice to the recipient. Dubai Properties reserves the right to make necessary revisions/alterations to any materials, plans, dimensions and drawings included in this brochure at its absolute discretion without incurring any liability from the recipient.

## 2 BEDROOM

### Riverside

Unit 5  
Podium Level 1 & 2  
1<sup>st</sup> to 17<sup>th</sup> Floor

Unit Area 1011.26 Sq.Ft. / 93.95 Sq.M.  
Balcony Area 181.58 Sq.Ft. / 16.87 Sq.M.  
Total Area 1192.85 Sq.Ft. / 110.82 Sq.M.



**Disclaimer :**

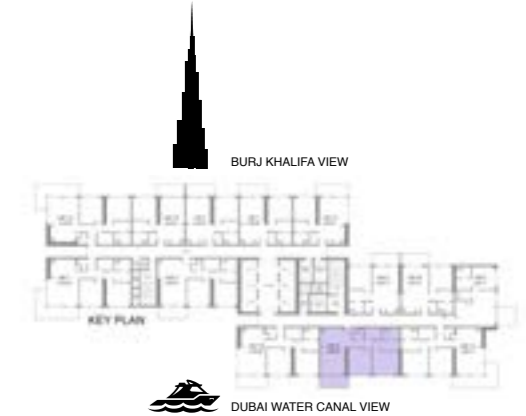
All materials, dimensions, and drawings are preliminary and indicative only and are subject to design changes. The actual as-built areas may vary from the stated areas. Furnishings, accessories, hard & soft landscaping, pavements, decorative features, swimming pool and other amenities displayed in this brochure are not part of a standard unit and are included for illustrative purposes only. Dubai Properties reserves the right to change any information within this brochure at its sole discretion and without providing any notice to the recipient. Dubai Properties reserves the right to make necessary revisions/alterations to any materials, plans, dimensions and drawings included in this brochure at its absolute discretion without incurring any liability from the recipient.

## 2 BEDROOM

### Riverside

Unit 9  
2<sup>nd</sup> to 38<sup>th</sup> Floor

Unit Area 978 Sq.Ft. / 90.88 Sq.M.  
Balcony Area 96 Sq.Ft. / 8.90 Sq.M.  
Total Area 1074 Sq.Ft. / 99.78 Sq.M.



**Disclaimer :**

All materials, dimensions, and drawings are preliminary and indicative only and are subject to design changes. The actual as-built areas may vary from the stated areas. Furnishings, accessories, hard & soft landscaping, pavements, decorative features, swimming pool and other amenities displayed in this brochure are not part of a standard unit and are included for illustrative purposes only. Dubai Properties reserves the right to change any information within this brochure at its sole discretion and without providing any notice to the recipient. Dubai Properties reserves the right to make necessary revisions/alterations to any materials, plans, dimensions and drawings included in this brochure at its absolute discretion without incurring any liability from the recipient.

## 2 BEDROOM

### Riverside

Unit 9 | Level 1

Unit Area 982.85 Sq.Ft. / 91.31 Sq.M.

Balcony Area 198.16 Sq.Ft. / 18.41 Sq.M.

Total Area 1181.01 Sq.Ft. / 109.72 Sq.M.



**Disclaimer :**

All materials, dimensions, and drawings are preliminary and indicative only and are subject to design changes. The actual as-built areas may vary from the stated areas. Furnishings, accessories, hard & soft landscaping, pavements, decorative features, swimming pool and other amenities displayed in this brochure are not part of a standard unit and are included for illustrative purposes only. Dubai Properties reserves the right to change any information within this brochure at its sole discretion and without providing any notice to the recipient. Dubai Properties reserves the right to make necessary revisions/alterations to any materials, plans, dimensions and drawings included in this brochure at its absolute discretion without incurring any liability from the recipient.

## 2 BEDROOM

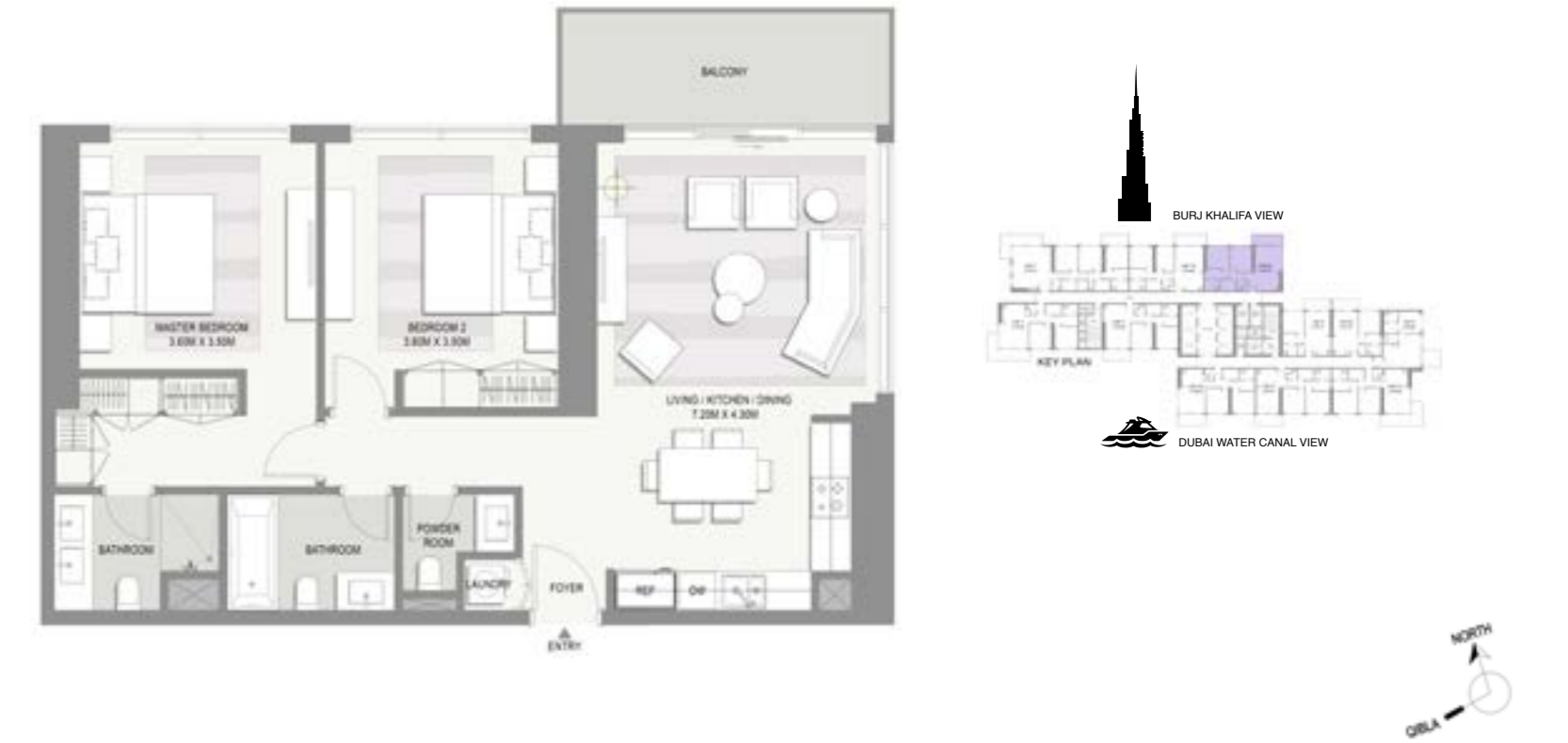
### Riverside

Unit 1  
18<sup>th</sup> to 40<sup>th</sup> Floor

Unit Area 1002.76 Sq.Ft. / 93.16 Sq.M.

Balcony Area 103.22 Sq.Ft. / 9.59 Sq.M.

Total Area 1105.99 Sq.Ft. / 102.75 Sq.M.



**Disclaimer :**

All materials, dimensions, and drawings are preliminary and indicative only and are subject to design changes. The actual as-built areas may vary from the stated areas. Furnishings, accessories, hard & soft landscaping, pavements, decorative features, swimming pool and other amenities displayed in this brochure are not part of a standard unit and are included for illustrative purposes only. Dubai Properties reserves the right to change any information within this brochure at its sole discretion and without providing any notice to the recipient. Dubai Properties reserves the right to make necessary revisions/alterations to any materials, plans, dimensions and drawings included in this brochure at its absolute discretion without incurring any liability from the recipient.

## 2 BEDROOM

### Riverside

Unit 7  
2<sup>nd</sup> to 15<sup>th</sup> Floor  
18<sup>th</sup> to 40<sup>th</sup> Floor

Unit Area 990.38 Sq.Ft. / 92.01 Sq.M.  
Balcony Area 90.73 Sq.Ft. / 8.43 Sq.M.  
Total Area 1081.12 Sq.Ft. / 100.44 Sq.M.



**Disclaimer :**

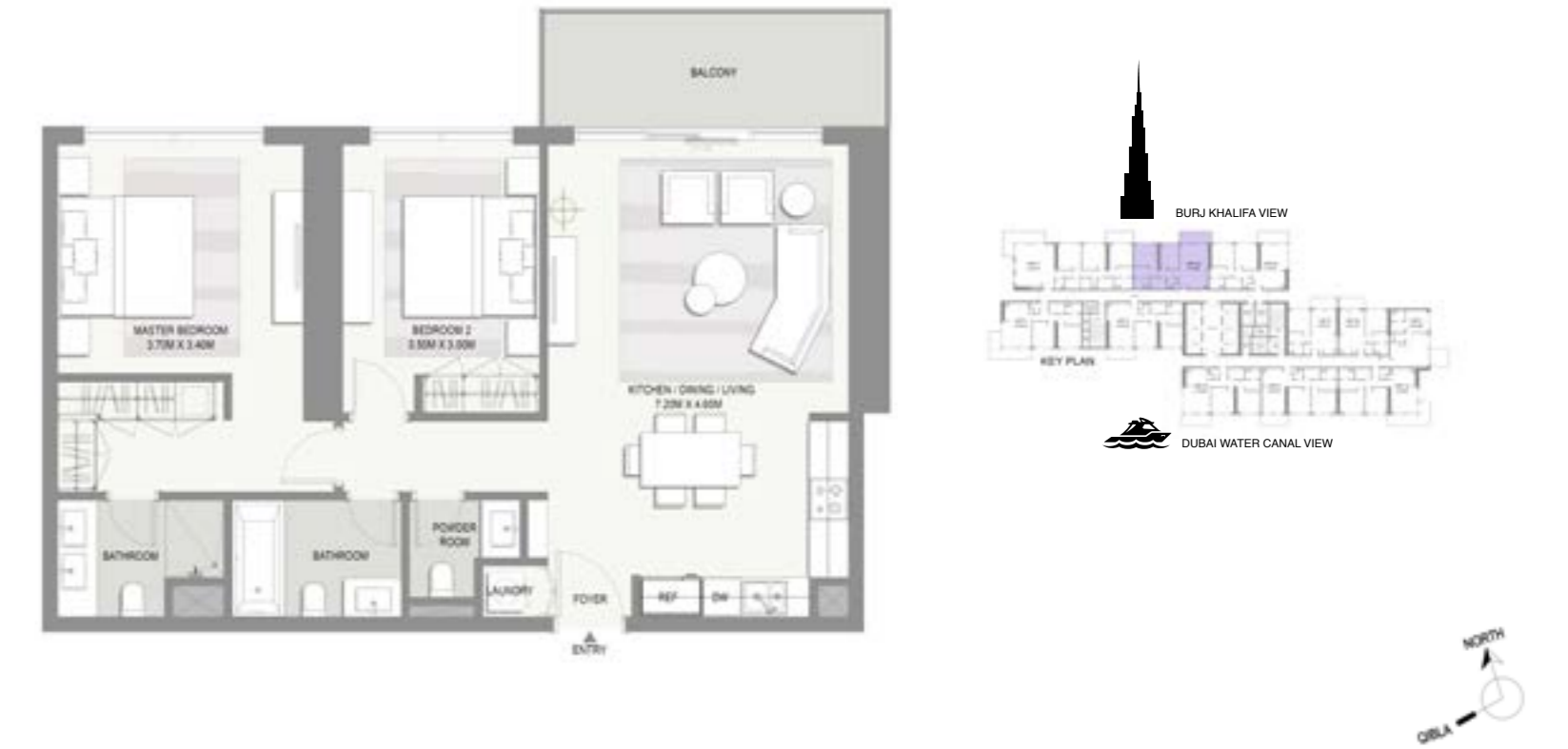
All materials, dimensions, and drawings are preliminary and indicative only and are subject to design changes. The actual as-built areas may vary from the stated areas. Furnishings, accessories, hard & soft landscaping, pavements, decorative features, swimming pool and other amenities displayed in this brochure are not part of a standard unit and are included for illustrative purposes only. Dubai Properties reserves the right to change any information within this brochure at its sole discretion and without providing any notice to the recipient. Dubai Properties reserves the right to make necessary revisions/alterations to any materials, plans, dimensions and drawings included in this brochure at its absolute discretion without incurring any liability from the recipient.

## 2 BEDROOM

### Riverside

Unit 2  
18<sup>th</sup> to 40<sup>th</sup> Floor

Unit Area 975.53 Sq.Ft. / 90.63 Sq.M.  
Balcony Area 106.45 Sq.Ft. / 9.89 Sq.M.  
Total Area 1081.98 Sq.Ft. / 100.52 Sq.M.



**Disclaimer :**

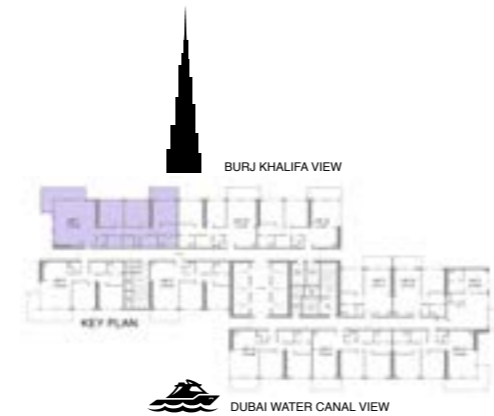
All materials, dimensions, and drawings are preliminary and indicative only and are subject to design changes. The actual as-built areas may vary from the stated areas. Furnishings, accessories, hard & soft landscaping, pavements, decorative features, swimming pool and other amenities displayed in this brochure are not part of a standard unit and are included for illustrative purposes only. Dubai Properties reserves the right to change any information within this brochure at its sole discretion and without providing any notice to the recipient. Dubai Properties reserves the right to make necessary revisions/alterations to any materials, plans, dimensions and drawings included in this brochure at its absolute discretion without incurring any liability from the recipient.

## 3 BEDROOM

### Riverside

Unit 3  
19<sup>th</sup> to 40<sup>th</sup> Floor

Unit Area 1512.75 Sq.Ft. / 140.54 Sq.M.  
Balcony Area 270.71 Sq.Ft. / 25.15 Sq.M.  
Total Area 1783.47 Sq.Ft. / 165.69 Sq.M.



**Disclaimer :**

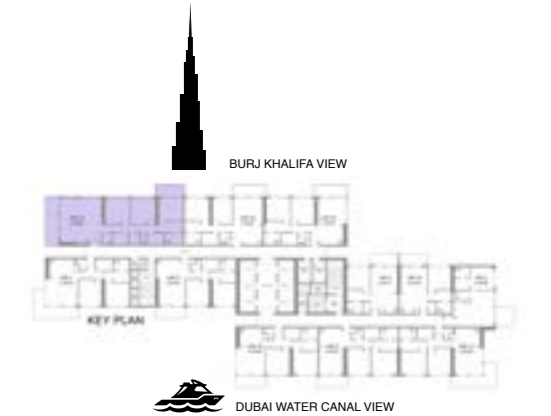
All materials, dimensions, and drawings are preliminary and indicative only and are subject to design changes. The actual as-built areas may vary from the stated areas. Furnishings, accessories, hard & soft landscaping, pavements, decorative features, swimming pool and other amenities displayed in this brochure are not part of a standard unit and are included for illustrative purposes only. Dubai Properties reserves the right to change any information within this brochure at its sole discretion and without providing any notice to the recipient. Dubai Properties reserves the right to make necessary revisions/alterations to any materials, plans, dimensions and drawings included in this brochure at its absolute discretion without incurring any liability from the recipient.

## 3 BEDROOM

### Riverside

Unit 3 | Level 18

Unit Area 1513.19 Sq.Ft. / 140.58 Sq.M.  
Balcony Area 269.42 Sq.Ft. / 25.03 Sq.M.  
Total Area 1782.61 Sq.Ft. / 165.61 Sq.M.



**Disclaimer :**

All materials, dimensions, and drawings are preliminary and indicative only and are subject to design changes. The actual as-built areas may vary from the stated areas. Furnishings, accessories, hard & soft landscaping, pavements, decorative features, swimming pool and other amenities displayed in this brochure are not part of a standard unit and are included for illustrative purposes only. Dubai Properties reserves the right to change any information within this brochure at its sole discretion and without providing any notice to the recipient. Dubai Properties reserves the right to make necessary revisions/alterations to any materials, plans, dimensions and drawings included in this brochure at its absolute discretion without incurring any liability from the recipient.

## 3 BEDROOM

### Riverside

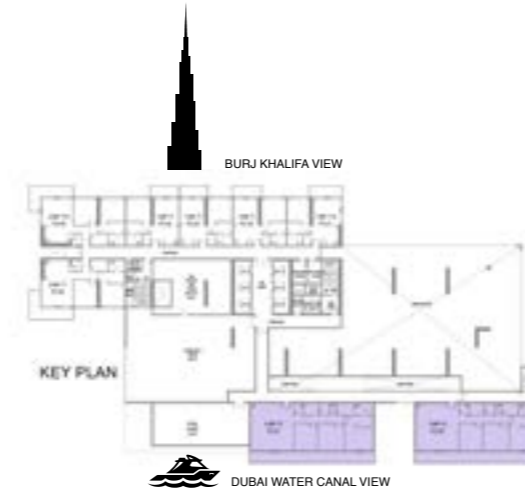
Unit 5 & 6 Level P1

Unit 7 & 8 Level P2

Unit Area 1514.48 Sq.Ft. / 140.70 Sq.M.

Balcony Area 395.25 Sq.Ft. / 36.72 Sq.M.

Total Area 1909.73 Sq.Ft. / 177.42 Sq.M.



**Disclaimer :**

All materials, dimensions, and drawings are preliminary and indicative only and are subject to design changes. The actual as-built areas may vary from the stated areas. Furnishings, accessories, hard & soft landscaping, pavements, decorative features, swimming pool and other amenities displayed in this brochure are not part of a standard unit and are included for illustrative purposes only. Dubai Properties reserves the right to change any information within this brochure at its sole discretion and without providing any notice to the recipient. Dubai Properties reserves the right to make necessary revisions/alterations to any materials, plans, dimensions and drawings included in this brochure at its absolute discretion without incurring any liability from the recipient.

## 3 BEDROOM

### Riverside

Unit 4 | Level P1

Unit Area 1514.58 Sq.Ft. / 140.71 Sq.M.

Balcony Area 393.85 Sq.Ft. / 36.59 Sq.M.

Total Area 1908.44 Sq.Ft. / 177.30 Sq.M.



**Disclaimer :**

All materials, dimensions, and drawings are preliminary and indicative only and are subject to design changes. The actual as-built areas may vary from the stated areas. Furnishings, accessories, hard & soft landscaping, pavements, decorative features, swimming pool and other amenities displayed in this brochure are not part of a standard unit and are included for illustrative purposes only. Dubai Properties reserves the right to change any information within this brochure at its sole discretion and without providing any notice to the recipient. Dubai Properties reserves the right to make necessary revisions/alterations to any materials, plans, dimensions and drawings included in this brochure at its absolute discretion without incurring any liability from the recipient.



---

# R I V E R S I D E

---

**24/7 Sales Contact No.**

+971 4248 3400

**For More Details Visit**

[www.dubaimarasi.com](http://www.dubaimarasi.com)